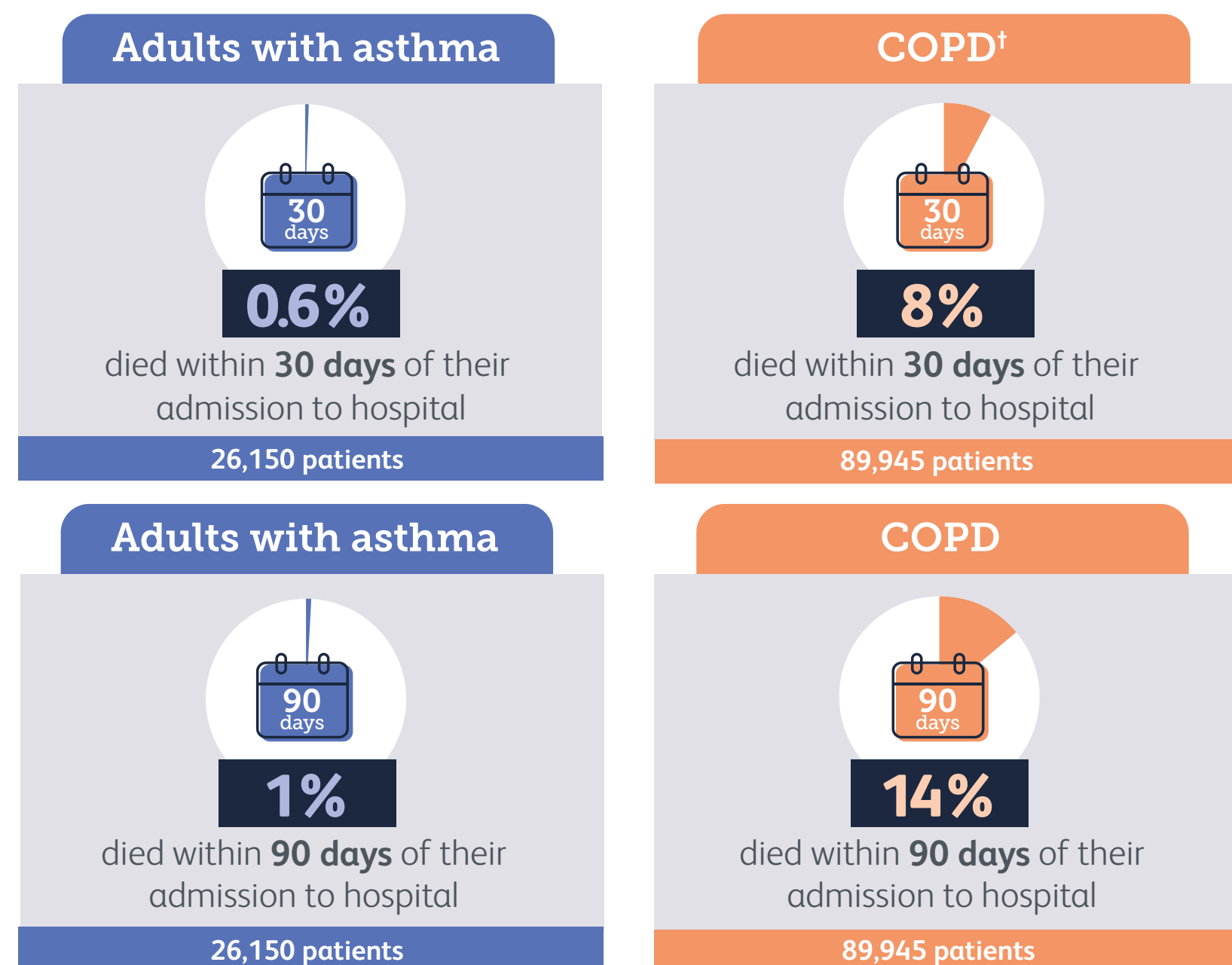


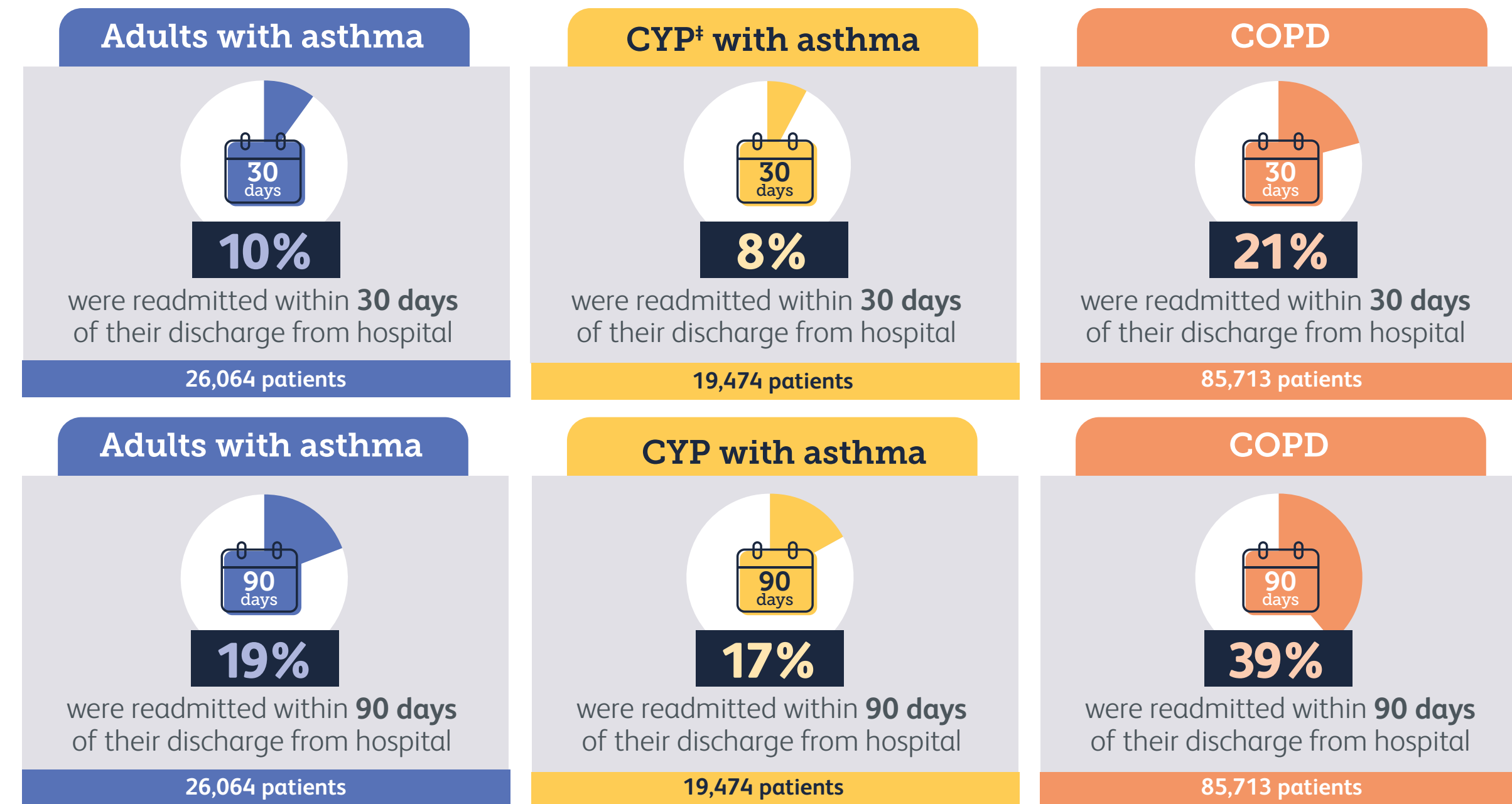
# What happens after someone is admitted to hospital with a flare-up of asthma or COPD?

The 30- and 90-day outcomes for patients admitted to hospital between 1 April 2021 – 31 March 2023

## Mortality\*



## Readmission



\*Due to small number suppression, we are unable to report on mortality in children and young people with asthma.

†COPD = chronic obstructive pulmonary disease

\*CYP = children and young people