

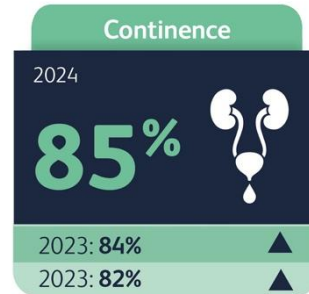
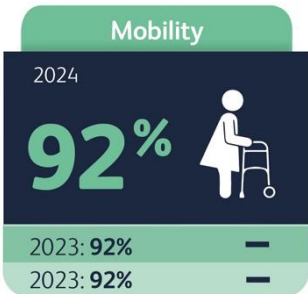
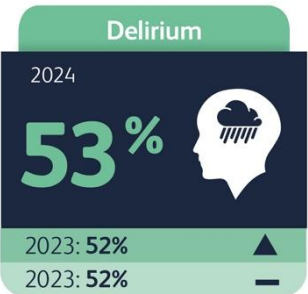
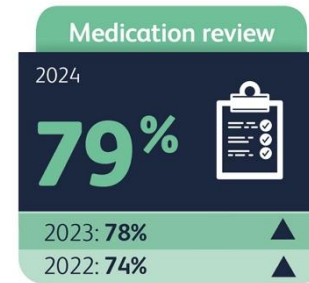
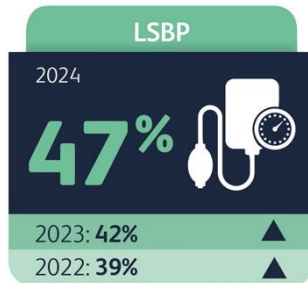
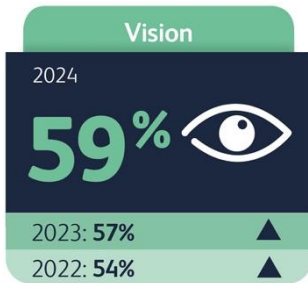
Report at a glance

In 2024, 1,894 people sustained a femoral fracture as an inpatient; 1,628 (86%) were due to a fall and included as cases in the National Audit of Inpatient Falls.

KPI 1: Proportion of patients with a high-quality multifactorial assessment to optimise safe activity (MASA)

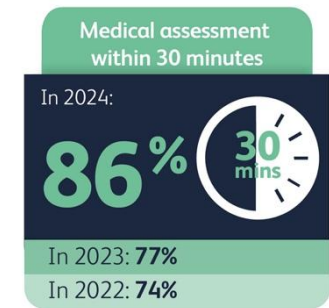
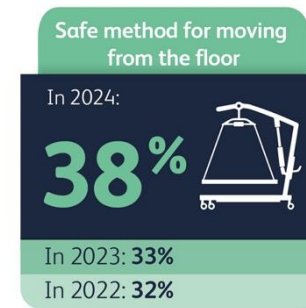
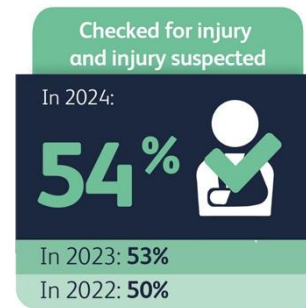
A patient is considered to have had a 'high-quality MASA' if five or more of the six actions below are documented.

The MASA six actions



This report reflects on six years of continuous audit of patients who have sustained a fall-related inpatient femoral fracture. It presents and explores performance in actions taken to optimise a patient's fitness to stay active without falling (KPI 1) and post-fall actions that align with NICE quality standards 86 (KPIs 2, 3 and 4).

KPIs 2, 3 and 4: Post-fall management



Spotlights on healthcare improvement

- 1 Trusts and health boards review their data to select an area for local improvement from one of the three suggestions detailed in the full report.
 - 2 Trusts and health boards to review and refine methods for identifying and inputting cases into the expanded audit.
-

Recommendations

- 1 ICBs in England and health boards in Wales to ensure providers undertake a facilities audit in 2026 and review organisational capacity to:
 - a. support patients to move safely while they are in hospital
 - b. effectively and safely manage patients who have fallen while in hospital.
 - 2 ICBs and health boards to guarantee that severe harm is always attributed to inpatient fall-related hip fractures.
-

Click on the spotlights and recommendations boxes for more information. The full FFFAP glossary is available on the [RCP website](#).